

# A PLANNED UNIT DEVELOPMENT BOCA GREENS PLAT NO. 8

BEING A SUBDIVISION OF LAND IN SECTION 12,  
TOWNSHIP 47 SOUTH, RANGE 41 EAST  
PALM BEACH COUNTY, FLORIDA  
SHEET 5 OF 6

SEE SHEET NO. 3  
MATCH LINE

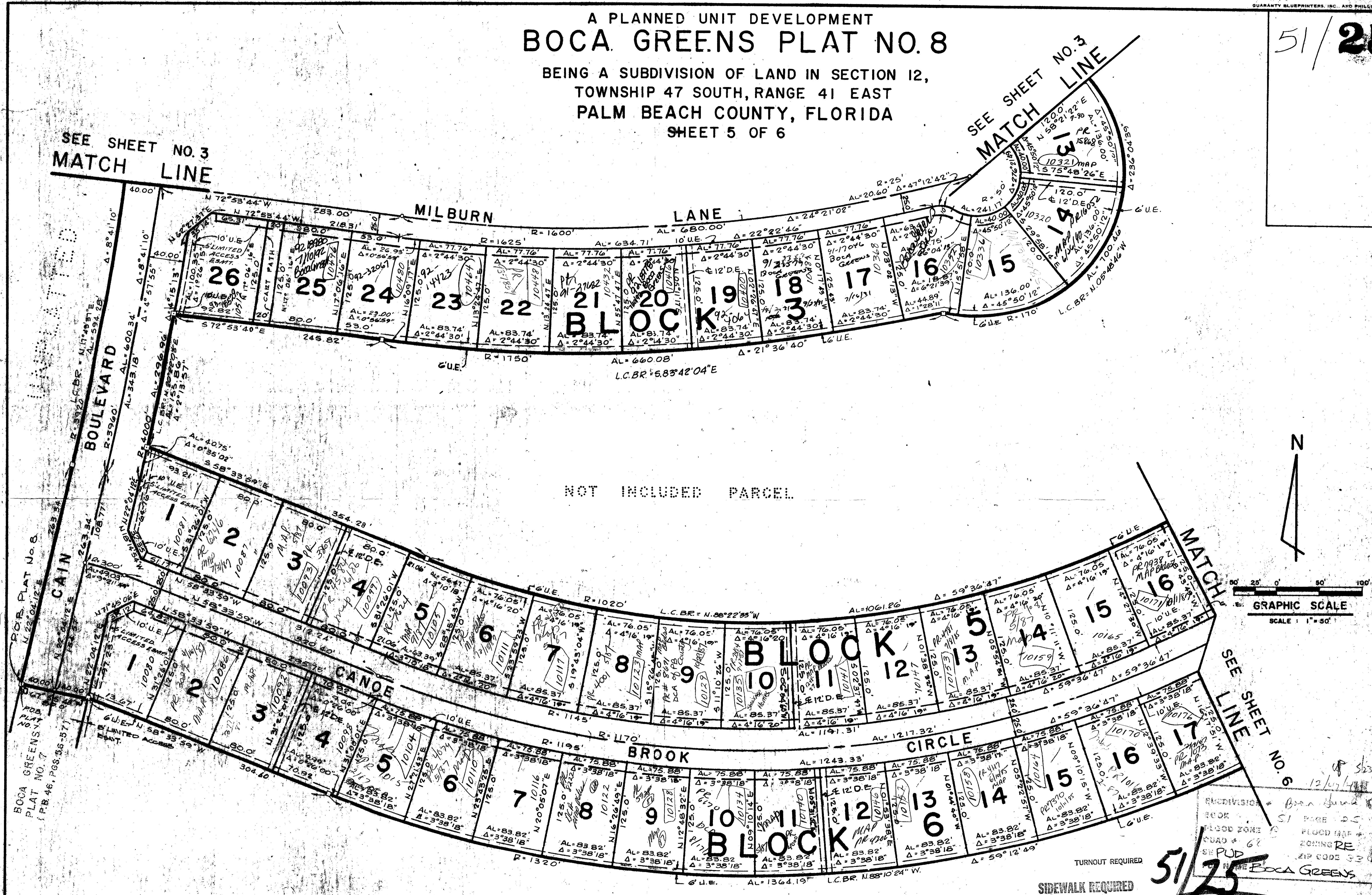
SEE SHEET NO. 3  
MATCH LINE

DRAWING NUMBER  
**51/25**

DRAWING NUMBER

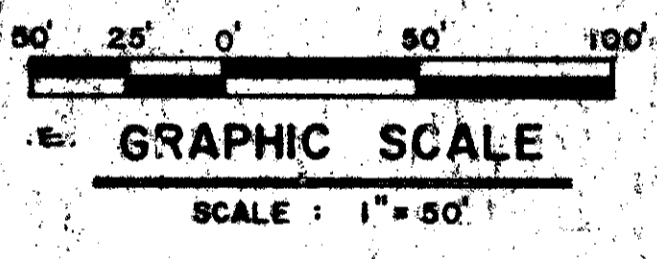
DRAWING NUMBER

DRAWING NUMBER



NOT INCLUDED PARCEL

UNPLATTED



TURNOUT REQUIRED  
SIDEWALK REQUIRED

Field Book No. B-190 Pg. 65 Design	ROBERT E. OWEN & ASSOCIATES, INC. ENGINEERS · PLANNERS · SURVEYORS WEST PALM BEACH FLORIDA	D208-002 <b>BOCA GREENS</b> PLAT NO. 8	Job No. 81-052
Drawn T. FROELICH			Scale 1" = 50'
Checked		PALM BEACH COUNTY, FLORIDA	Date DEC. 1984
			Sheet 5
			File No. BF-23271

51/25

ENCLOSURE - Boca Greens  
BOOK 51 PAGE 25  
FLOOD ZONE 0 FLOOD MAP 0  
ROAD 68 ZONING RE  
SE PUD 2P CODES 33  
BOCA GREENS

PLAN HOLD CORPORATION · IRVINE, CALIFORNIA  
RENDERED BY NUMBER 0754R

PLAN HOLD CORPORATION · IRVINE, CALIFORNIA  
RENDERED BY NUMBER 0754R

PLAN HOLD CORPORATION · IRVINE, CALIFORNIA  
RENDERED BY NUMBER 0754R

AP 12324